

# TRAFFIC SUMMARY

**JAN THRU DEC 2008**

*\*These figures reflect year to date stats compared to last year's stats.*

	ALL TRAFFICS			INJURY T/Cs			K INJURY T/Cs*			A INJURY T/Cs*		
AREA	2007	2008	% +/-	2007	2008	% +/-	2007	2008	% +/-	2007	2008	% +/-
CENTRAL	1923	1970	2.4	774	846	9.3	9	10	11.1	18	30	66.7
HOLLENBECK	1838	1716	-6.6	684	632	-7.6	6	7	16.7	22	24	9.1
NEWTON	2235	2141	-4.2	848	875	3.2	12	14	16.7	40	43	7.5
NORTHEAST	2596	2392	-7.9	968	894	-7.6	13	7	-46.2	36	32	-11.1
RAMPART	2846	2851	0.2	1053	1162	10.4	7	10	42.9	42	39	-7.1
OCB TOTALS	11438	11070	-3.2	4327	4409	1.9	47	48	2.1	158	168	6.3

\*These totals are included in the Injury T/C's total.

	DUI T/Cs				HIT AND RUN T/Cs				PEDESTRIAN T/Cs			
AREA	2007	2008	% +/-	% PROB	2007	2008	% +/-	% PROB	2007	2008	% +/-	% PROB
CENTRAL	31	80	158.1	4.1	813	799	-1.7	40.6	146	173	18.5	8.8
HOLLENBECK	89	112	25.8	6.5	955	916	-4.1	53.4	117	117	0.0	6.8
NEWTON	96	160	66.7	7.5	1200	1091	-9.1	51.0	155	174	12.3	8.1
NORTHEAST	98	120	22.4	5.0	1440	1282	-11.0	53.6	153	154	0.7	6.4
RAMPART	158	188	19.0	6.6	1603	1537	-4.1	53.9	189	236	24.9	8.3
OCB TOTALS	472	660	39.8	6.0	6011	5625	-6.4	50.8	760	854	12.4	7.7

**DEC**

*\*These figures reflect current month stats compared to the same date of last year's stats.*

	ALL TRAFFICS			INJURY T/Cs			K INJURY T/Cs*			A INJURY T/Cs*		
AREA	2007	2008	% +/-	2007	2008	% +/-	2007	2008	% +/-	2007	2008	% +/-
CENTRAL	169	147	-13.0	60	65	8.3	0	1	100.0	1	2	100.0
HOLLENBECK	164	140	-14.6	63	55	-12.7	0	0	0.0	1	0	-100.0
NEWTON	207	184	-11.1	65	71	9.2	3	1	-66.7	2	2	0.0
NORTHEAST	227	178	-21.6	94	65	-30.9	0	0	0.0	2	1	-50.0
RAMPART	260	232	-10.8	96	98	2.1	0	1	100.0	8	3	-62.5
OCB TOTALS	1027	881	-14.2	378	354	-6.3	3	3	0.0	14	8	-42.9

\*These totals are included in the Injury T/C's total.

	DUI T/Cs				HIT AND RUN T/Cs				PEDESTRIAN T/Cs			
AREA	2007	2008	% +/-	% PROB	2007	2008	% +/-	% PROB	2007	2008	% +/-	% PROB
CENTRAL	1	6	500.0	4.1	74	63	-14.9	42.9	11	19	72.7	12.9
HOLLENBECK	7	9	28.6	6.4	80	73	-8.8	52.1	10	11	10.0	7.9
NEWTON	13	22	69.2	12.0	116	95	-18.1	51.6	16	18	12.5	9.8
NORTHEAST	14	14	0.0	7.9	125	98	-21.6	55.1	15	8	-46.7	4.5
RAMPART	18	8	-55.6	3.4	150	131	-12.7	56.5	23	21	-8.7	9.1
OCB TOTALS	53	59	11.3	6.7	545	460	-15.6	52.2	75	77	2.7	8.7

# TRAFFIC SUMMARY

**NOV DEC**

*\*These figures compare previous month's stats to the current month's stats.*

AREA	ALL TRAFFICS			INJURY T/Cs			K INJURY T/Cs*			A INJURY T/Cs*		
	NOV	DEC	% +/-	NOV	DEC	% +/-	NOV	DEC	% +/-	NOV	DEC	% +/-
CENTRAL	142	147	3.5	76	65	-14.5	1	1	0.0	6	2	-66.7
HOLLENBECK	129	140	8.5	43	55	27.9	0	0	0.0	2	0	-100.0
NEWTON	180	184	2.2	79	71	-10.1	2	1	-50.0	6	2	-66.7
NORTHEAST	197	178	-9.6	87	65	-25.3	0	0	0.0	3	1	-66.7
RAMPART	230	232	0.9	96	98	2.1	1	1	0.0	2	3	50.0
OCB TOTALS	878	881	0.3	381	354	-7.1	4	3	-25.0	19	8	-57.9

\*These totals are included in the Injury T/C's total.

AREA	DUI T/Cs				HIT AND RUN T/Cs				PEDESTRIAN T/Cs			
	NOV	DEC	% +/-	% PROB	NOV	DEC	% +/-	% PROB	NOV	DEC	% +/-	% PROB
CENTRAL	8	6	-25.0	4.1	57	63	10.5	42.9	18	19	5.6	12.9
HOLLENBECK	6	9	50.0	6.4	75	73	-2.7	52.1	11	11	0.0	7.9
NEWTON	16	22	37.5	12.0	83	95	14.5	51.6	14	18	28.6	9.8
NORTHEAST	10	14	40.0	7.9	108	98	-9.3	55.1	19	8	-57.9	4.5
RAMPART	17	8	-52.9	3.4	114	131	14.9	56.5	23	21	-8.7	9.1
OCB TOTALS	57	59	3.5	6.7	437	460	5.3	52.2	85	77	-9.4	8.7

**JAN 2008 YTD**

**DEC**

**NOV DEC**

COMPARES CURRENT YEAR STATS TO PREVIOUS YEAR

COMPARES PREVIOUS MONTHS

	COMBINED A/K T/Cs		
	2007	2008	% +/-
CENT	27	40	48.1
HOBK	28	31	10.7
NEWT	52	57	9.6
NORT	49	39	-20.4
RAMP	49	49	0.0
	205	216	5.4

	COMBINED A/K T/Cs		
	2007	2008	% +/-
CENT	1	3	200.0
HOBK	1	0	-100.0
NEWT	5	3	-40.0
NORT	2	1	-50.0
RAMP	8	4	-50.0
	17	11	-35.3

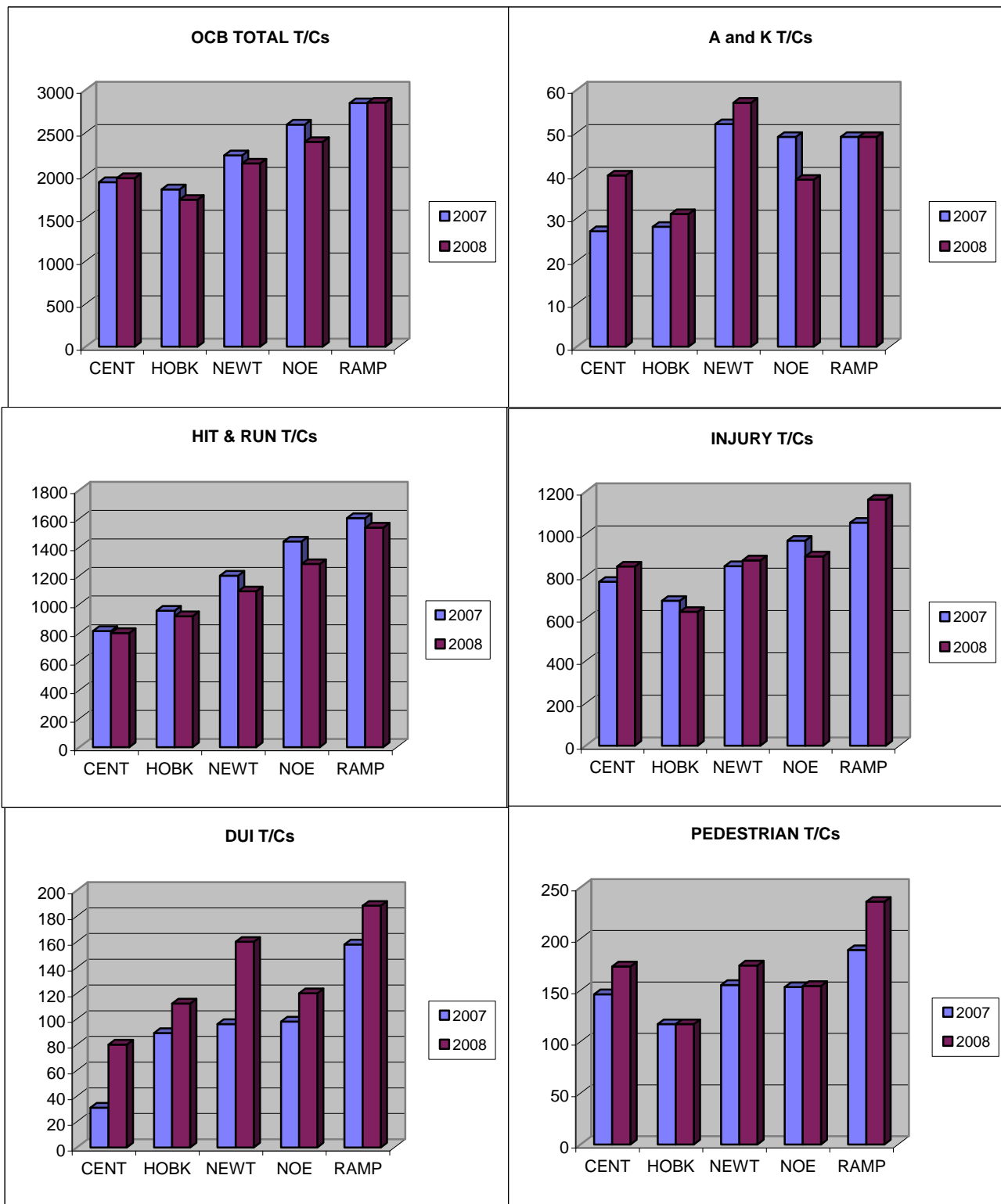
	COMBINED A/K T/Cs		
	NOV	DEC	% +/-
CENT	7	3	-57.1
HOBK	2	0	-100.0
NEWT	8	3	-62.5
NORT	3	1	-66.7
RAMP	3	4	33.3
	23	11	-52.2

# TRAFFIC SUMMARY

JAN THRU DEC 2008

OCB T/Cs

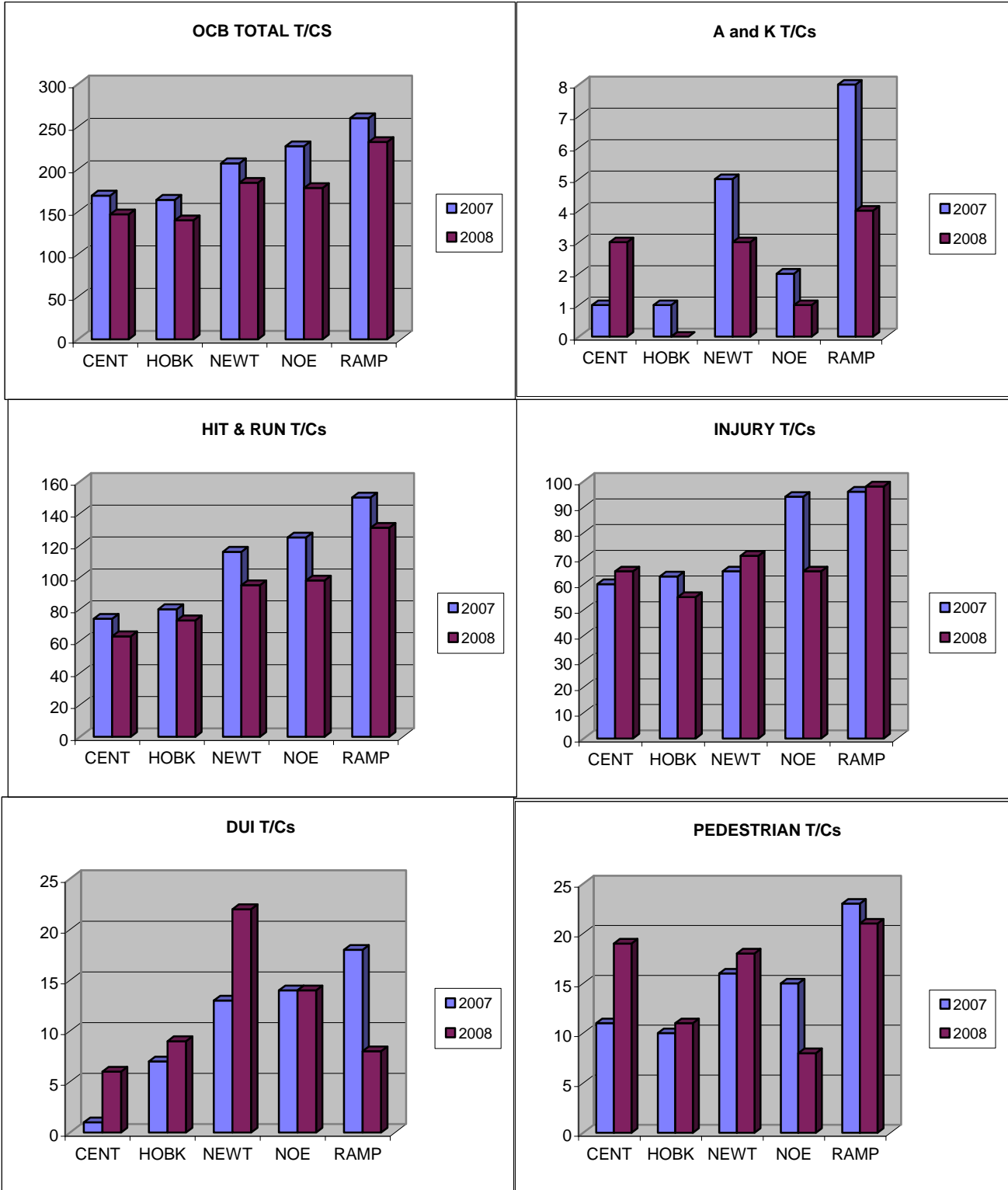
YTD



# TRAFFIC SUMMARY

DEC

OCB T/Cs CURRENT MONTH



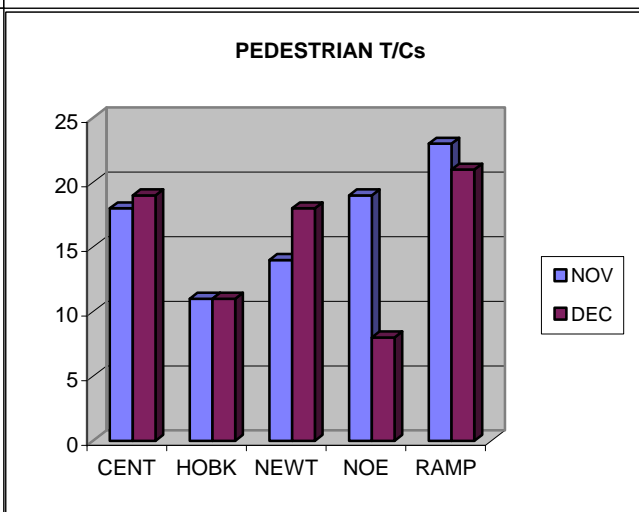
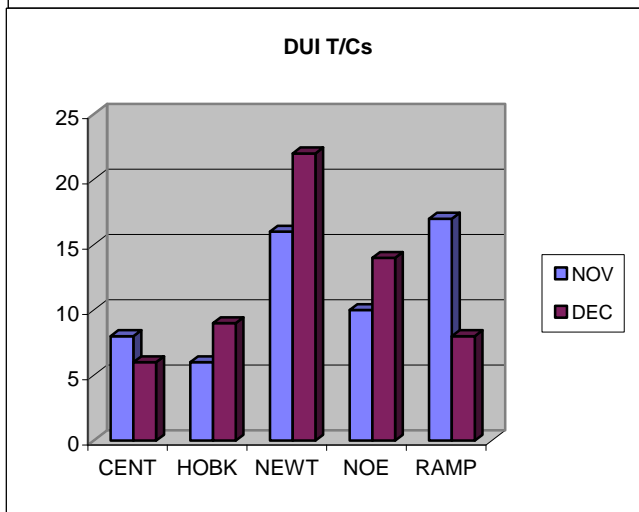
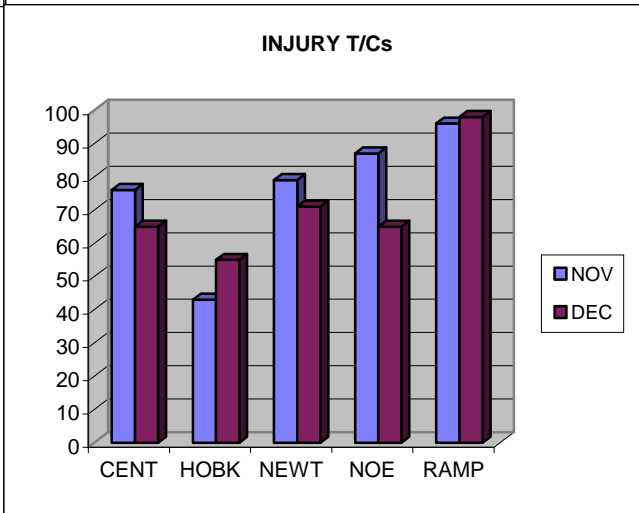
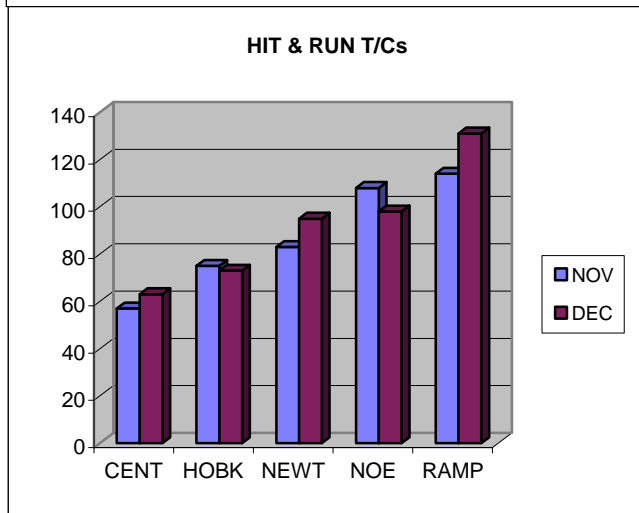
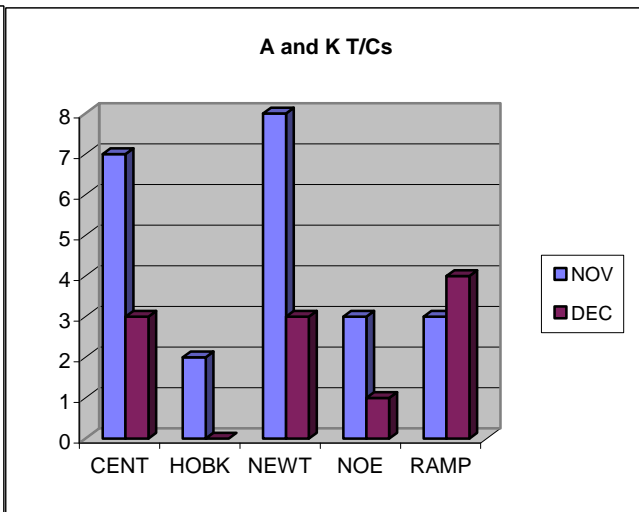
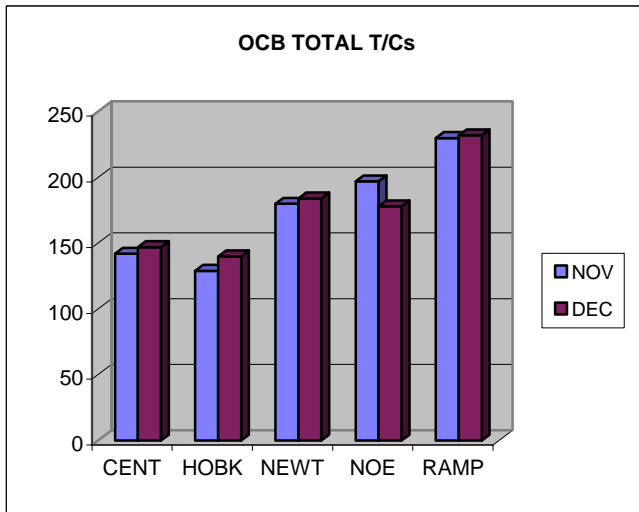
# TRAFFIC SUMMARY

NOV

DEC

OCB T/Cs

PREVIOUS MONTH VS CURRENT MONTH



JAN THRU DEC 2008

DEC DEC

NOV DEC

2007 2008

2007 2008

2008 2008

TOTAL	CountOfArea	CountOfArea
-------	-------------	-------------

TOTAL	CountOfArea	IntOfArea
-------	-------------	-----------

TOTAL	CountOfArea	IntOfArea
-------	-------------	-----------

CENTRAL	1923	1970
HOLLENBECK	1838	1716
NEWTON	2235	2141
NORTHEAST	2596	2392
RAMPART	2846	2851

CENTRAL		
HOLLENBECK		
NEWTON		
NORTHEAST		
RAMPART		

CENTRAL	169	147
HOLLENBECK	164	140
NEWTON	207	184
NORTHEAST	227	178
RAMPART	260	232

CENTRAL		
HOLLENBECK		
NEWTON		
NORTHEAST		
RAMPART		

CENTRAL	142	147
HOLLENBECK	129	140
NEWTON	180	184
NORTHEAST	197	178
RAMPART	230	232

INJURY	CountOfArea	CountOfArea
--------	-------------	-------------

INJURY	CountOfArea	IntOfArea
--------	-------------	-----------

INJURY	CountOfArea	IntOfArea
--------	-------------	-----------

CENTRAL	774	846
HOLLENBECK	684	632
NEWTON	848	875
NORTHEAST	968	894
RAMPART	1053	1162

CENTRAL		
HOLLENBECK		
NEWTON		
NORTHEAST		
RAMPART		

CENTRAL	60	65
HOLLENBECK	63	55
NEWTON	65	71
NORTHEAST	94	65
RAMPART	96	98

CENTRAL		
HOLLENBECK		
NEWTON		
NORTHEAST		
RAMPART		

CENTRAL	76	65
HOLLENBECK	43	55
NEWTON	79	71
NORTHEAST	87	65
RAMPART	96	98

K T/Cs	CountOfArea	CountOfArea	Area
--------	-------------	-------------	------

K T/Cs	CountOfArea	IntOfArea
--------	-------------	-----------

K T/Cs	CountOfArea	IntOfArea
--------	-------------	-----------

CENTRAL	9	10	Central
HOLLENBECK	6	7	Hollenbeck
NEWTON	12	14	Newton
NORTHEAST	13	7	Northeast
RAMPART	7	10	Rampart

CENTRAL	0	1
HOLLENBECK	0	0
NEWTON	3	1
NORTHEAST	0	0
RAMPART	0	1

CENTRAL	1	1
HOLLENBECK	0	0
NEWTON	2	1
NORTHEAST	0	0
RAMPART	1	1

A T/Cs	CountOfArea	CountOfArea
--------	-------------	-------------

A T/Cs	CountOfArea	IntOfArea
--------	-------------	-----------

A T/Cs	CountOfArea	IntOfArea
--------	-------------	-----------

CENTRAL	18	30
HOLLENBECK	22	24
NEWTON	40	43
NORTHEAST	36	32
RAMPART	42	39

CENTRAL	1	2
HOLLENBECK	1	0
NEWTON	2	2
NORTHEAST	2	1
RAMPART	8	3

CENTRAL	6	2
HOLLENBECK	2	0
NEWTON	6	2
NORTHEAST	3	1
RAMPART	2	3

DUI	CountOfArea	CountOfArea	Area
-----	-------------	-------------	------

DUI	CountOfArea	IntOfArea
-----	-------------	-----------

DUI	CountOfArea	IntOfArea
-----	-------------	-----------

CENTRAL	31	80
HOLLENBECK	89	112
NEWTON	96	160
NORTHEAST	98	120
RAMPART	158	188

CENTRAL	1	6
HOLLENBECK	7	9
NEWTON	13	22
NORTHEAST	14	14
RAMPART	18	8

CENTRAL	8	6
HOLLENBECK	6	9
NEWTON	16	22
NORTHEAST	10	14
RAMPART	17	8

H&R	CountOfArea	CountOfArea
-----	-------------	-------------

H&R	CountOfArea	IntOfArea
-----	-------------	-----------

H&R	CountOfArea	IntOfArea
-----	-------------	-----------

CENTRAL	813	799
HOLLENBECK	955	916
NEWTON	1200	1091
NORTHEAST	1440	1282
RAMPART	1603	1537

CENTRAL	74	63
HOLLENBECK	80	73
NEWTON	116	95
NORTHEAST	125	98
RAMPART	150	131

CENTRAL	57	63
HOLLENBECK	75	73
NEWTON	83	95
NORTHEAST	108	98
RAMPART	114	131

PED	CountOfArea	CountOfArea
-----	-------------	-------------

PED	CountOfArea	IntOfArea
-----	-------------	-----------

PED	CountOfArea	IntOfArea
-----	-------------	-----------

CENTRAL	146	173
HOLLENBECK	117	117
NEWTON	155	174
NORTHEAST	153	154
RAMPART	189	236

CENTRAL	11	19
HOLLENBECK	10	11
NEWTON	16	18
NORTHEAST	15	8
RAMPART	23	21

CENTRAL	18	19
HOLLENBECK	11	11
NEWTON	14	18
NORTHEAST	19	8
RAMPART	23	21

it MTH

Area  
CENTRAL  
HOLLENBECK  
NEWTON  
NORTHEAST  
RAMPART

Area  
CENTRAL  
HOLLENBECK  
NEWTON  
NORTHEAST  
RAMPART

Area  
CENTRAL  
HOLLENBECK  
NEWTON  
NORTHEAST  
RAMPART

Area  
CENTRAL  
HOLLENBECK  
NEWTON  
NORTHEAST  
RAMPART

Area  
CENTRAL  
HOLLENBECK  
NEWTON  
NORTHEAST  
RAMPART

Area  
CENTRAL  
HOLLENBECK  
NEWTON  
NORTHEAST  
RAMPART

Area  
CENTRAL  
HOLLENBECK  
NEWTON  
NORTHEAST  
RAMPART