

TRAFFIC SUMMARY

JAN THRU FEB 2009

**These figures reflect year to date stats compared to last year's stats.*

AREA	ALL TRAFFICS			INJURY T/Cs			K INJURY T/Cs*			A INJURY T/Cs*		
	2008	2009	% +/-	2008	2009	% +/-	2008	2009	% +/-	2008	2009	% +/-
CENTRAL	323	292	-9.6	137	138	0.7	2	1	-50.0	5	0	-100.0
HOLLENBECK	290	250	-13.8	107	117	9.3	0	0	0.0	5	2	-60.0
NEWTON	343	337	-1.7	125	129	3.2	1	1	0.0	3	4	33.3
NORTHEAST	401	347	-13.5	136	135	-0.7	0	2	200.0	4	2	-50.0
RAMPART	465	279	-40.0	185	126	-31.9	3	1	-66.7	9	9	0.0
OCB TOTALS	1822	1505	-17.4	690	645	-6.5	6	5	-16.7	26	17	-34.6

*These totals are included in the Injury T/C's total.

AREA	DUI T/Cs				HIT AND RUN T/Cs				PEDESTRIAN T/Cs			
	2008	2009	% +/-	% PROB	2008	2009	% +/-	% PROB	2008	2009	% +/-	% PROB
CENTRAL	17	7	-58.8	2.4	126	104	-17.5	35.6	28	35	25.0	12.0
HOLLENBECK	21	14	-33.3	5.6	150	124	-17.3	49.6	17	28	64.7	11.2
NEWTON	18	31	72.2	9.2	183	177	-3.3	52.5	20	32	60.0	9.5
NORTHEAST	13	25	92.3	7.2	226	175	-22.6	50.4	35	20	-42.9	5.8
RAMPART	29	25	-13.8	9.0	261	148	-43.3	53.0	46	36	-21.7	12.9
OCB TOTALS	98	102	4.1	6.8	946	728	-23.0	48.4	146	151	3.4	10.0

FEB

**These figures reflect current month stats compared to the same date of last year's stats.*

AREA	ALL TRAFFICS			INJURY T/Cs			K INJURY T/Cs*			A INJURY T/Cs*		
	2008	2009	% +/-	2008	2009	% +/-	2008	2009	% +/-	2008	2009	% +/-
CENTRAL	156	160	2.6	65	74	13.8	1	0	-100.0	4	0	-100.0
HOLLENBECK	150	120	-20.0	63	55	-12.7	0	0	0.0	4	1	-75.0
NEWTON	145	170	17.2	55	64	16.4	1	0	-100.0	0	2	200.0
NORTHEAST	210	172	-18.1	71	63	-11.3	0	2	200.0	1	0	-100.0
RAMPART	210	123	-41.4	75	60	-20.0	0	1	100.0	5	5	0.0
OCB TOTALS	871	745	-14.5	329	316	-4.0	2	3	50.0	14	8	-42.9

*These totals are included in the Injury T/C's total.

AREA	DUI T/Cs				HIT AND RUN T/Cs				PEDESTRIAN T/Cs			
	2008	2009	% +/-	% PROB	2008	2009	% +/-	% PROB	2008	2009	% +/-	% PROB
CENTRAL	10	4	-60.0	2.5	58	55	-5.2	34.4	14	18	28.6	11.3
HOLLENBECK	9	6	-33.3	5.0	75	62	-17.3	51.7	9	12	33.3	10.0
NEWTON	10	13	30.0	7.6	73	104	42.5	61.2	5	12	140.0	7.1
NORTHEAST	7	12	71.4	7.0	118	85	-28.0	49.4	15	12	-20.0	7.0
RAMPART	14	10	-28.6	8.1	110	62	-43.6	50.4	18	21	16.7	17.1
OCB TOTALS	50	45	-10.0	6.0	434	368	-15.2	49.4	61	75	23.0	10.1

TRAFFIC SUMMARY

JAN FEB

**These figures compare previous month's stats to the current month's stats.*

AREA	ALL TRAFFICS			INJURY T/Cs			K INJURY T/Cs*			A INJURY T/Cs*		
	JAN	FEB	% +/-	JAN	FEB	% +/-	JAN	FEB	% +/-	JAN	FEB	% +/-
CENTRAL	133	160	20.3	64	74	15.6	1	0	-100.0	0	0	0.0
HOLLENBECK	130	120	-7.7	62	55	-11.3	0	0	0.0	1	1	0.0
NEWTON	167	170	1.8	65	64	-1.5	1	0	-100.0	2	2	0.0
NORTHEAST	175	172	-1.7	72	63	-12.5	0	2	200.0	2	0	-100.0
RAMPART	157	123	-21.7	66	60	-9.1	0	1	100.0	4	5	25.0
OCB TOTALS	762	745	-2.2	329	316	-4.0	2	3	50.0	9	8	-11.1

*These totals are included in the Injury T/C's total.

AREA	DUI T/Cs				HIT AND RUN T/Cs				PEDESTRIAN T/Cs			
	JAN	FEB	% +/-	% PROB	JAN	FEB	% +/-	% PROB	JAN	FEB	% +/-	% PROB
CENTRAL	3	4	33.3	2.5	49	55	12.2	34.4	17	18	5.9	11.3
HOLLENBECK	8	6	-25.0	5.0	62	62	0.0	51.7	16	12	-25.0	10.0
NEWTON	18	13	-27.8	7.6	73	104	42.5	61.2	20	12	-40.0	7.1
NORTHEAST	13	12	-7.7	7.0	90	85	-5.6	49.4	8	12	50.0	7.0
RAMPART	15	10	-33.3	8.1	86	62	-27.9	50.4	15	21	40.0	17.1
OCB TOTALS	57	45	-21.1	6.0	360	368	2.2	49.4	76	75	-1.3	10.1

JAN 2009 YTD

FEB

JAN FEB

COMPARES CURRENT YEAR STATS TO PREVIOUS YEAR

COMPARES PREVIOUS MONTH

	COMBINED A/K T/Cs		
	2008	2009	% +/-
CENT	7	1	-85.7
HOBK	5	2	-60.0
NEWT	4	5	25.0
NORT	4	4	0.0
RAMP	12	10	-16.7
TOTAL	32	22	-31.3

	COMBINED A/K T/Cs		
	2008	2009	% +/-
CENT	5	0	-100.0
HOBK	4	1	-75.0
NEWT	1	2	100.0
NORT	1	2	100.0
RAMP	5	6	20.0
TOTAL	16	11	-31.3

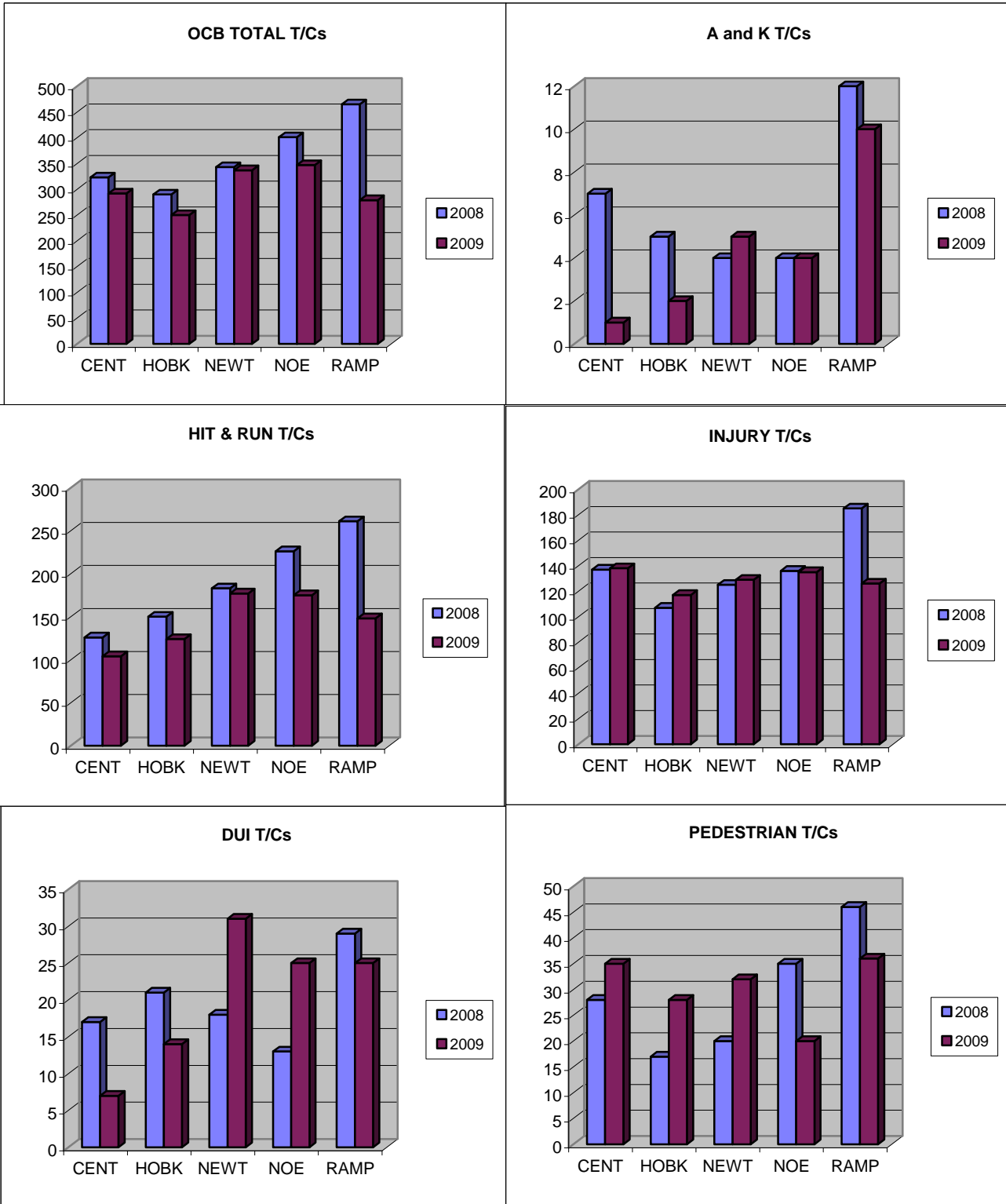
	COMBINED A/K T/Cs		
	JAN	FEB	% +/-
CENT	1	0	-100.0
HOBK	1	1	0.0
NEWT	3	2	-33.3
NORT	2	2	0.0
RAMP	4	6	50.0
TOTAL	11	11	0.0

TRAFFIC SUMMARY

JAN THRU FEB 2009

OCB T/Cs

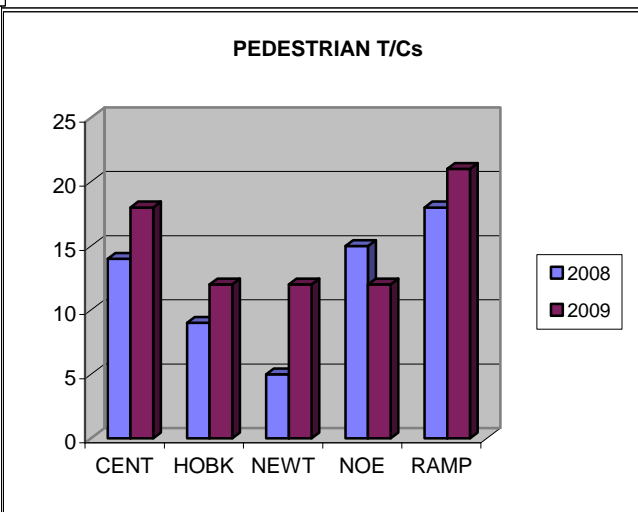
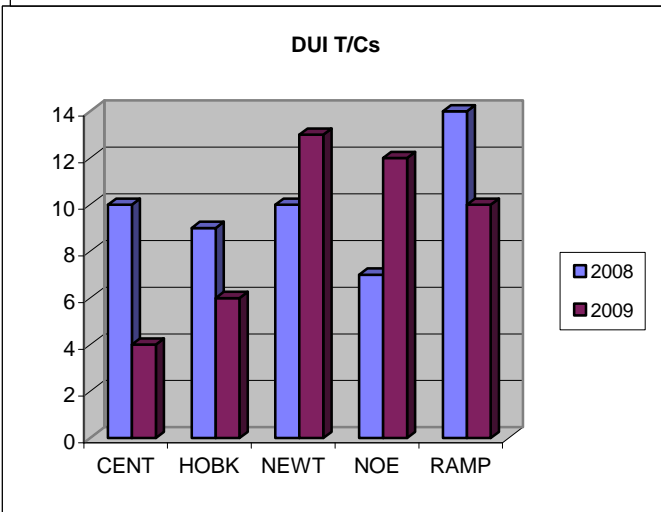
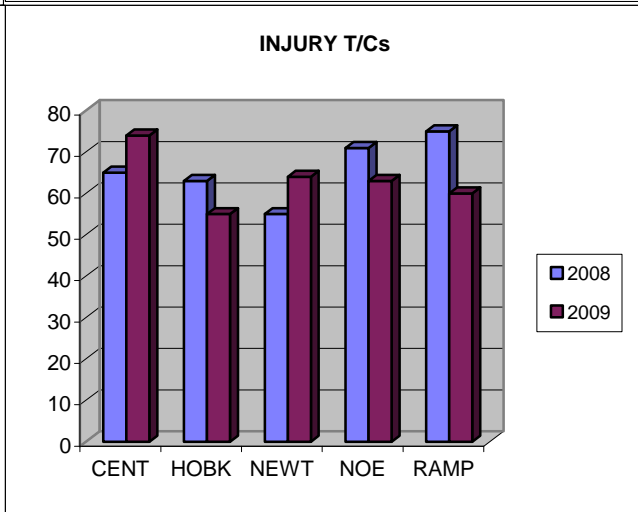
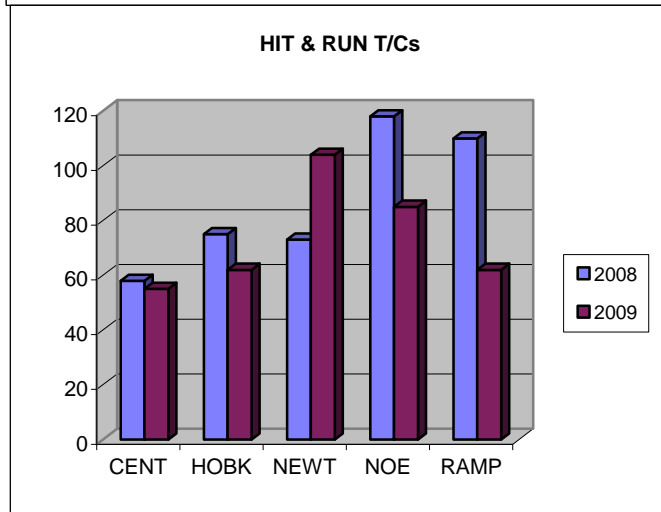
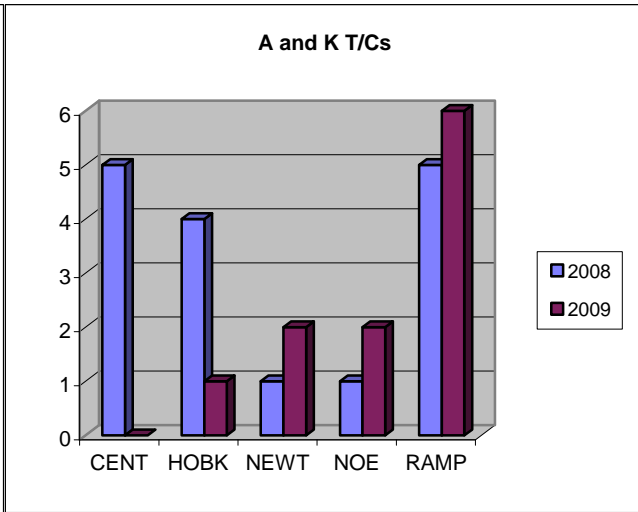
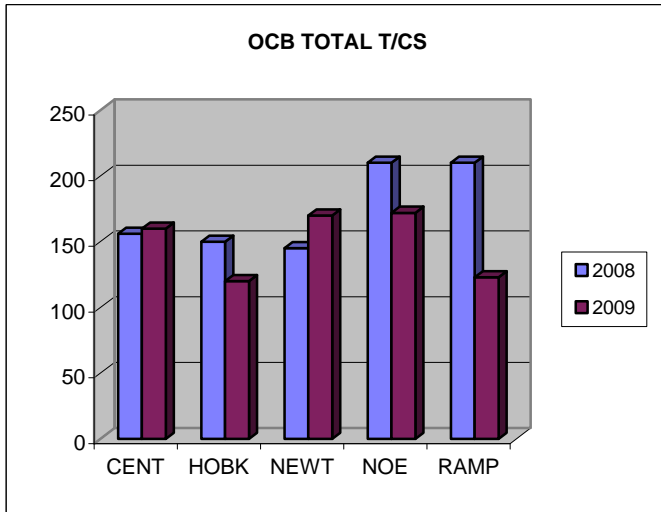
YTD



TRAFFIC SUMMARY

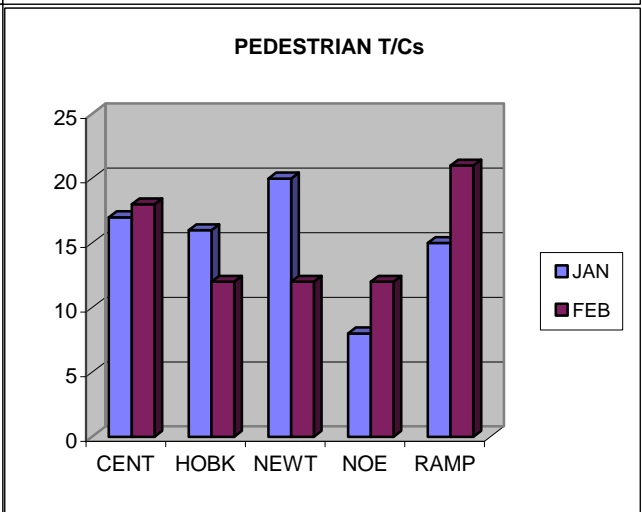
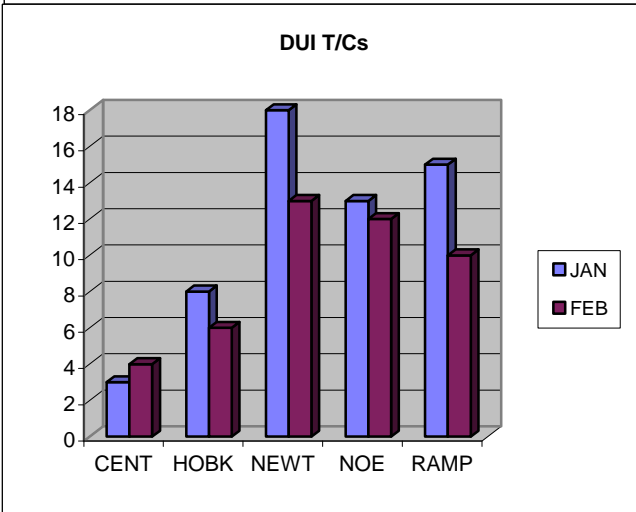
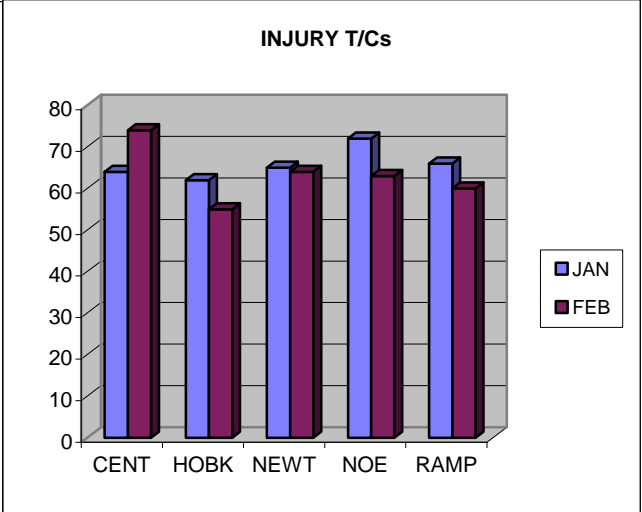
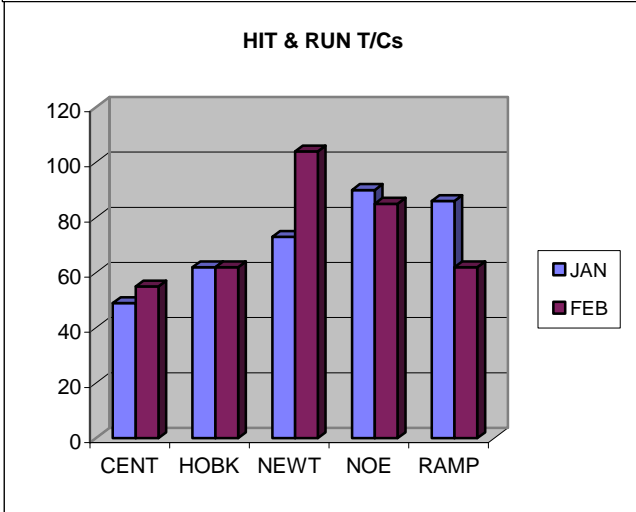
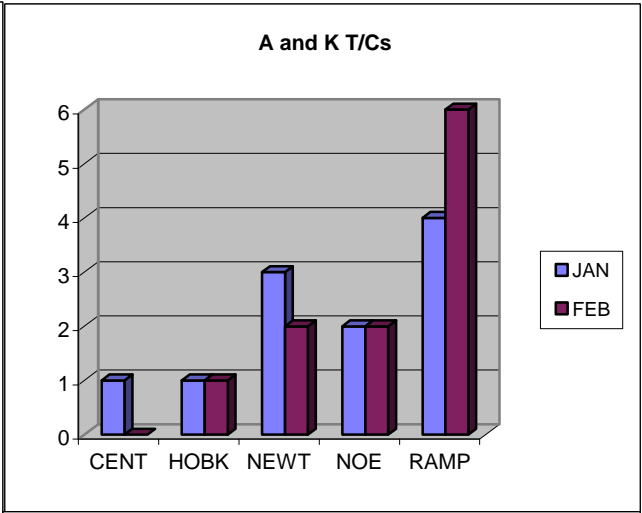
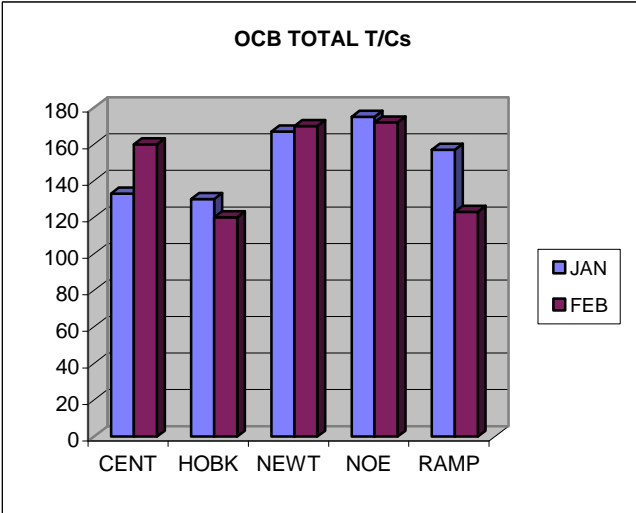
FEB

OCB T/Cs CURRENT MONTH



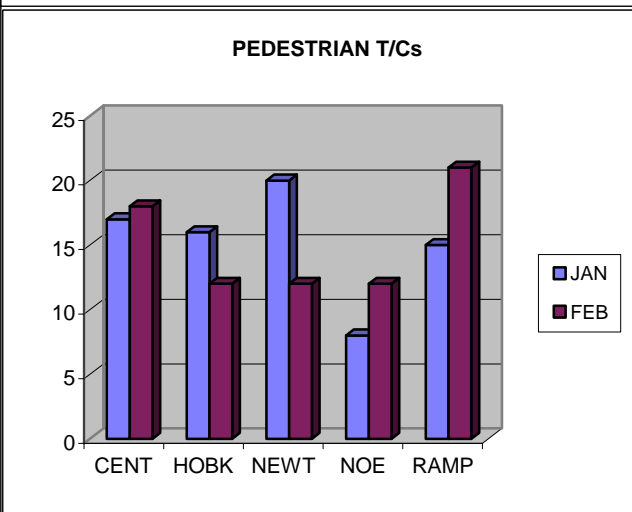
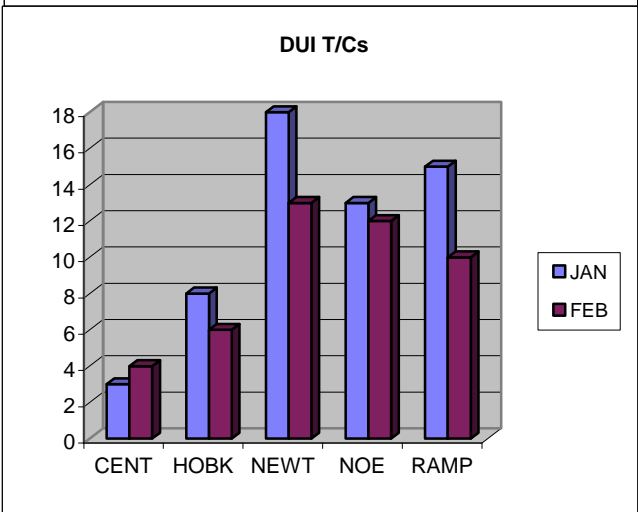
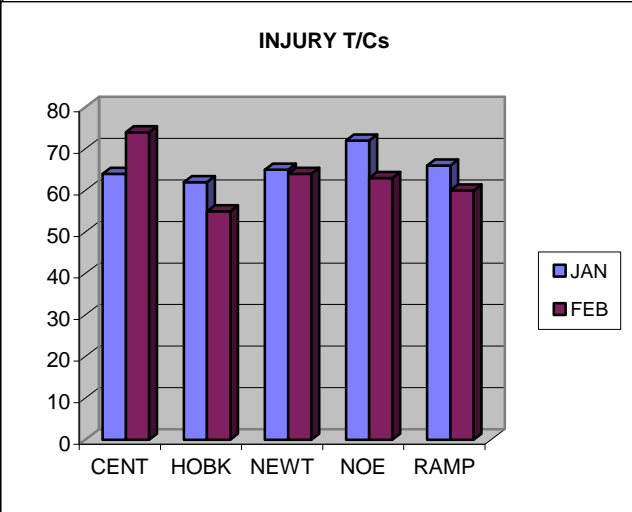
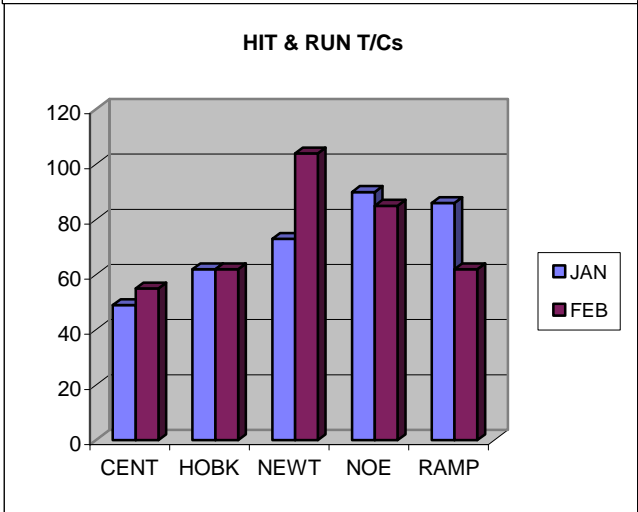
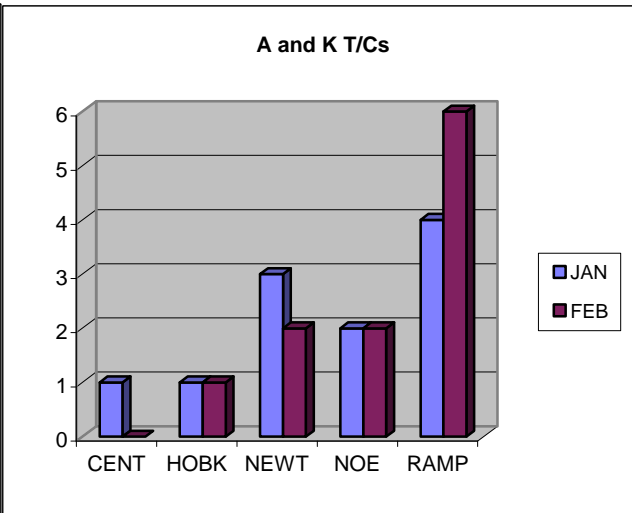
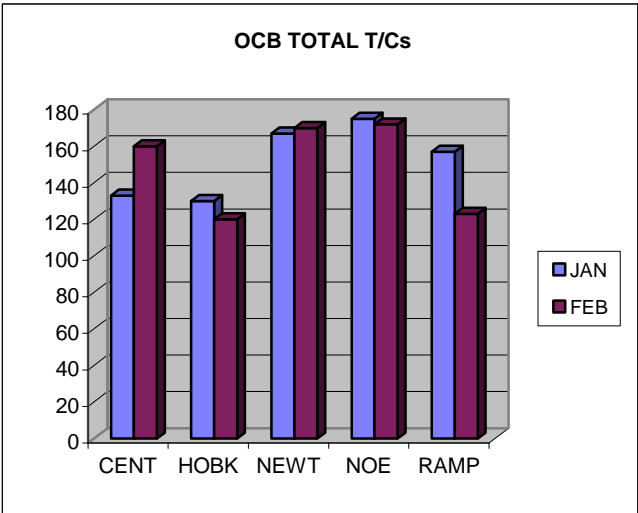
TRAFFIC SUMMARY

JAN FEB OCB T/Cs PREVIOUS MONTH VS CURRENT MONTH



TRAFFIC SUMMARY

JAN FEB OCB T/Cs PREVIOUS MONTH VS CURRENT MONTH



Jan thru CURRENT month

Page2 Current MTH/YR v last years MTH/YR

Page 2 Prior MTH v Current MTH

JAN THRU FEB 2009			
2008		2009	
TOTAL			
CountOfArea	CountOfArea		
CENTRAL	323	292	CENTRAL
HOLLENBECK	290	250	HOLLENBECK
NEWTON	343	337	NEWTON
NORTHEAST	401	347	NORTHEAST
RAMPART	465	279	RAMPART

FEB FEB			
2008		2009	
TOTAL			
CountOfArea	IntOfArea		
CENTRAL	156	160	CENTRAL
HOLLENBECK	150	120	HOLLENBECK
NEWTON	145	170	NEWTON
NORTHEAST	210	172	NORTHEAST
RAMPART	210	123	RAMPART

JAN FEB			
2009		2009	
TOTAL			
CountOfArea	IntOfArea		
CENTRAL	133	160	CENTRAL
HOLLENBECK	130	120	HOLLENBECK
NEWTON	167	170	NEWTON
NORTHEAST	175	172	NORTHEAST
RAMPART	157	123	RAMPART

INJURY			
CountOfArea	CountOfArea		
CENTRAL	137	138	CENTRAL
HOLLENBECK	107	117	HOLLENBECK
NEWTON	125	129	NEWTON
NORTHEAST	136	135	NORTHEAST
RAMPART	185	126	RAMPART

INJURY			
CountOfArea	IntOfArea		
CENTRAL	65	74	CENTRAL
HOLLENBECK	63	55	HOLLENBECK
NEWTON	55	64	NEWTON
NORTHEAST	71	63	NORTHEAST
RAMPART	75	60	RAMPART

INJURY			
CountOfArea	IntOfArea		
CENTRAL	64	74	CENTRAL
HOLLENBECK	62	55	HOLLENBECK
NEWTON	65	64	NEWTON
NORTHEAST	72	63	NORTHEAST
RAMPART	66	60	RAMPART

K T/Cs			
CountOfArea	CountOfArea	Area	
CENTRAL	2	1	Central
HOLLENBECK	0	0	Hollenbeck
NEWTON	1	1	Newton
NORTHEAST	0	2	Northeast
RAMPART	3	1	Rampart

K T/Cs			
CountOfArea	IntOfArea		
CENTRAL	1	0	CENTRAL
HOLLENBECK	0	0	HOLLENBECK
NEWTON	1	0	NEWTON
NORTHEAST	0	2	NORTHEAST
RAMPART	0	1	RAMPART

K T/Cs			
CountOfArea	IntOfArea		
CENTRAL	1	0	CENTRAL
HOLLENBECK	0	0	HOLLENBECK
NEWTON	1	0	NEWTON
NORTHEAST	0	2	NORTHEAST
RAMPART	0	1	RAMPART

A T/Cs			
CountOfArea	CountOfArea		
CENTRAL	5	0	CENTRAL
HOLLENBECK	5	2	HOLLENBECK
NEWTON	3	4	NEWTON
NORTHEAST	4	2	NORTHEAST
RAMPART	9	9	RAMPART

A T/Cs			
CountOfArea	IntOfArea		
CENTRAL	4	0	CENTRAL
HOLLENBECK	4	1	HOLLENBECK
NEWTON	0	2	NEWTON
NORTHEAST	1	0	NORTHEAST
RAMPART	5	5	RAMPART

A T/Cs			
CountOfArea	IntOfArea		
CENTRAL	0	0	CENTRAL
HOLLENBECK	1	1	HOLLENBECK
NEWTON	2	2	NEWTON
NORTHEAST	2	0	NORTHEAST
RAMPART	4	5	RAMPART

DUI			
CountOfArea	CountOfArea	Area	
CENTRAL	17	7	CENTRAL
HOLLENBECK	21	14	HOLLENBECK
NEWTON	18	31	NEWTON
NORTHEAST	13	25	NORTHEAST
RAMPART	29	25	RAMPART

DUI			
CountOfArea	IntOfArea		
CENTRAL	10	4	CENTRAL
HOLLENBECK	9	6	HOLLENBECK
NEWTON	10	13	NEWTON
NORTHEAST	7	12	NORTHEAST
RAMPART	14	10	RAMPART

DUI			
CountOfArea	IntOfArea		
CENTRAL	3	4	CENTRAL
HOLLENBECK	8	6	HOLLENBECK
NEWTON	18	13	NEWTON
NORTHEAST	13	12	NORTHEAST
RAMPART	15	10	RAMPART

H&R			
CountOfArea	CountOfArea		
CENTRAL	126	104	CENTRAL
HOLLENBECK	150	124	HOLLENBECK
NEWTON	183	177	NEWTON
NORTHEAST	226	175	NORTHEAST

H&R			
CountOfArea	IntOfArea		
CENTRAL	58	55	CENTRAL
HOLLENBECK	75	62	HOLLENBECK
NEWTON	73	104	NEWTON
NORTHEAST	118	85	NORTHEAST

H&R			
CountOfArea	IntOfArea		
CENTRAL	49	55	CENTRAL
HOLLENBECK	62	62	HOLLENBECK
NEWTON	73	104	NEWTON
NORTHEAST	90	85	NORTHEAST

RAMPART 261 148 RAMPART

RAMPART 110 62 RAMPART

RAMPART 86 62 RAMPART

PED			
CountOfArea	CountOfArea		
CENTRAL	28	35	CENTRAL
HOLLENBECK	17	28	HOLLENBECK
NEWTON	20	32	NEWTON
NORTHEAST	35	20	NORTHEAST
RAMPART	46	36	RAMPART

PED			
CountOfArea	IntOfArea		
CENTRAL	14	18	CENTRAL
HOLLENBECK	9	12	HOLLENBECK
NEWTON	5	12	NEWTON
NORTHEAST	15	12	NORTHEAST
RAMPART	18	21	RAMPART

PED			
CountOfArea	IntOfArea		
CENTRAL	17	18	CENTRAL
HOLLENBECK	16	12	HOLLENBECK
NEWTON	20	12	NEWTON
NORTHEAST	8	12	NORTHEAST
RAMPART	15	21	RAMPART
