

TRAFFIC SUMMARY

JAN THRU OCT 2006

**These figures reflect year to date stats compared to last year's stats.*

AREA	ALL TRAFFICS			INJURY T/Cs			K INJURY T/Cs*			A INJURY T/Cs*		
	2005	2006	% +/-	2005	2006	% +/-	2005	2006	% +/-	2005	2006	% +/-
CENTRAL	1583	1669	5.4	744	762	2.4	5	4	-20.0	22	23	4.5
HOLLENBECK	1572	1489	-5.3	630	611	-3.0	11	3	-72.7	25	26	4.0
NEWTON	1888	1983	5.0	864	861	-0.3	14	10	-28.6	35	41	17.1
NORTHEAST	2108	2125	0.8	825	812	-1.6	7	13	85.7	25	37	48.0
RAMPART	2424	2372	-2.1	1028	964	-6.2	3	4	33.3	35	33	-5.7
OCB TOTALS	9575	9638	0.7	4091	4010	-2.0	40	34	-15.0	142	160	12.7

*These totals are included in the Injury T/C's total.

AREA	DUI T/Cs				HIT AND RUN T/Cs				PEDESTRIAN T/Cs			
	2005	2006	% +/-	% PROB	2005	2006	% +/-	% PROB	2005	2006	% +/-	% PROB
CENTRAL	51	47	-7.8	2.8	685	705	2.9	42.2	158	165	4.4	9.9
HOLLENBECK	69	78	13.0	5.2	884	775	-12.3	52.0	120	89	-25.8	6.0
NEWTON	86	91	5.8	4.6	1079	1105	2.4	55.7	169	160	-5.3	8.1
NORTHEAST	110	95	-13.6	4.5	1186	1170	-1.3	55.1	136	147	8.1	6.9
RAMPART	142	116	-18.3	4.9	1436	1335	-7.0	56.3	189	185	-2.1	7.8
OCB TOTALS	458	427	-6.8	4.4	5270	5090	-3.4	52.8	772	746	-3.4	7.7

OCT

**These figures reflect current month stats compared to the same date of last year's stats.*

AREA	ALL TRAFFICS			INJURY T/Cs			K INJURY T/Cs*			A INJURY T/Cs*		
	2005	2006	% +/-	2005	2006	% +/-	2005	2006	% +/-	2005	2006	% +/-
CENTRAL	160	181	13.1	72	81	12.5	2	1	-50.0	2	2	0.0
HOLLENBECK	159	160	0.6	67	65	-3.0	1	4	300.0	3	3	0.0
NEWTON	194	209	7.7	91	94	3.3	1	2	100.0	6	4	-33.3
NORTHEAST	245	221	-9.8	101	91	-9.9	0	0	0.0	4	5	25.0
RAMPART	252	252	0.0	106	105	-0.9	0	0	0.0	1	2	100.0
OCB TOTALS	1010	1023	1.3	437	436	-0.2	4	7	75.0	16	16	0.0

*These totals are included in the Injury T/C's total.

AREA	DUI T/Cs				HIT AND RUN T/Cs				PEDESTRIAN T/Cs			
	2005	2006	% +/-	% PROB	2005	2006	% +/-	% PROB	2005	2006	% +/-	% PROB
CENTRAL	6	7	16.7	3.9	69	78	13.0	43.1	11	21	90.9	11.6
HOLLENBECK	11	6	-45.5	3.8	82	85	3.7	53.1	13	13	0.0	8.1
NEWTON	9	12	33.3	5.7	114	111	-2.6	53.1	16	15	-6.3	7.2
NORTHEAST	10	5	-50.0	2.3	139	120	-13.7	54.3	24	18	-25.0	8.1
RAMPART	12	6	-50.0	2.4	153	142	-7.2	56.3	21	16	-23.8	6.3
OCB TOTALS	48	36	-25.0	3.5	557	536	-3.8	52.4	85	83	-2.4	8.1

TRAFFIC SUMMARY

SEPT OCT

**These figures compare previous month's stats to the current month's stats.*

AREA	ALL TRAFFICS			INJURY T/Cs			K INJURY T/Cs*			A INJURY T/Cs*		
	SEPT	OCT	% +/-	SEPT	OCT	% +/-	SEPT	OCT	% +/-	SEPT	OCT	% +/-
CENTRAL	143	181	26.6	61	81	32.8	1	1	0.0	4	2	-50.0
HOLLENBECK	141	160	13.5	63	65	3.2	1	4	300.0	3	3	0.0
NEWTON	170	209	22.9	74	94	27.0	1	2	100.0	4	4	0.0
NORTHEAST	225	221	-1.8	83	91	9.6	0	0	0.0	2	5	150.0
RAMPART	250	252	0.8	107	105	-1.9	0	0	0.0	6	2	-66.7
OCB TOTALS	929	1023	10.1	388	436	12.4	3	7	133.3	19	16	-15.8

*These totals are included in the Injury T/C's total.

AREA	DUI T/Cs				HIT AND RUN T/Cs				PEDESTRIAN T/Cs			
	SEPT	OCT	% +/-	% PROB	SEPT	OCT	% +/-	% PROB	SEPT	OCT	% +/-	% PROB
CENTRAL	5	7	40.0	3.9	58	78	34.5	43.1	16	21	31.3	11.6
HOLLENBECK	9	6	-33.3	3.8	63	85	34.9	53.1	10	13	30.0	8.1
NEWTON	11	12	9.1	5.7	90	111	23.3	53.1	11	15	36.4	7.2
NORTHEAST	15	5	-66.7	2.3	126	120	-4.8	54.3	19	18	-5.3	8.1
RAMPART	12	6	-50.0	2.4	146	142	-2.7	56.3	19	16	-15.8	6.3
OCB TOTALS	52	36	-30.8	3.5	483	536	11.0	52.4	75	83	10.7	8.1

JAN THRU OCT 2006

OCT

SEPT OCT

COMPARES CURRENT YEAR STATS TO PREVIOUS YEAR

COMPARES PREVIOUS MONTH

	COMBINED A/K T/Cs		
	2005	2006	% +/-
CENT	27	27	0.0
HOBK	36	29	-19.4
NEWT	49	51	4.1
NORT	32	50	56.3
RAMP	38	37	-2.6
	182	194	6.6

	COMBINED A/K T/Cs		
	2005	2006	% +/-
CENT	4	3	-25.0
HOBK	4	7	75.0
NEWT	7	6	-14.3
NORT	4	5	25.0
RAMP	1	2	100.0
	20	23	15.0

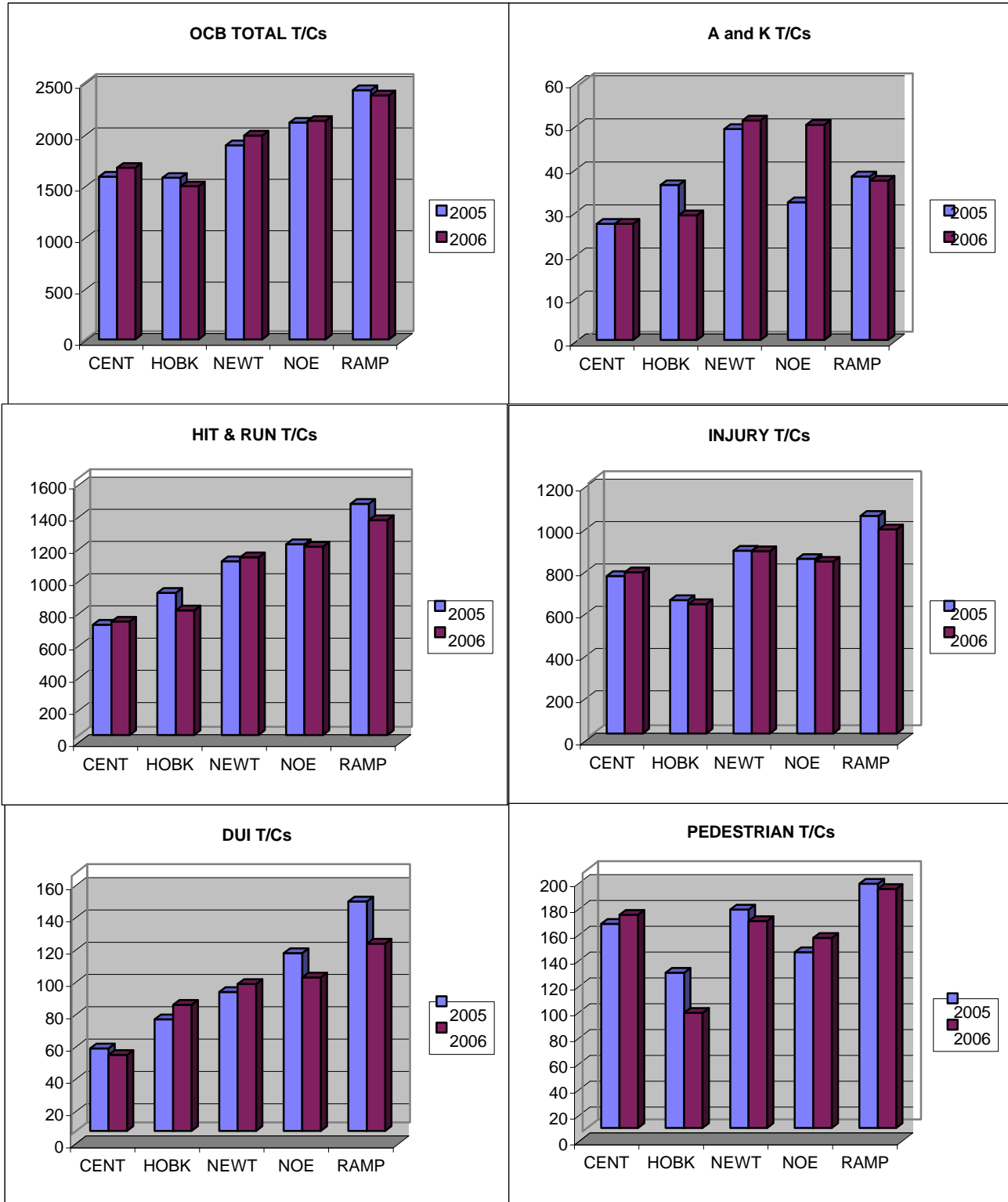
	COMBINED A/K T/Cs		
	SEPT	OCT	% +/-
CENT	5	3	-40.0
HOBK	4	7	75.0
NEWT	5	6	20.0
NORT	2	5	150.0
RAMP	6	2	-66.7
	22	23	4.5

TRAFFIC SUMMARY

JAN THRU OCT 2006

OCB T/Cs

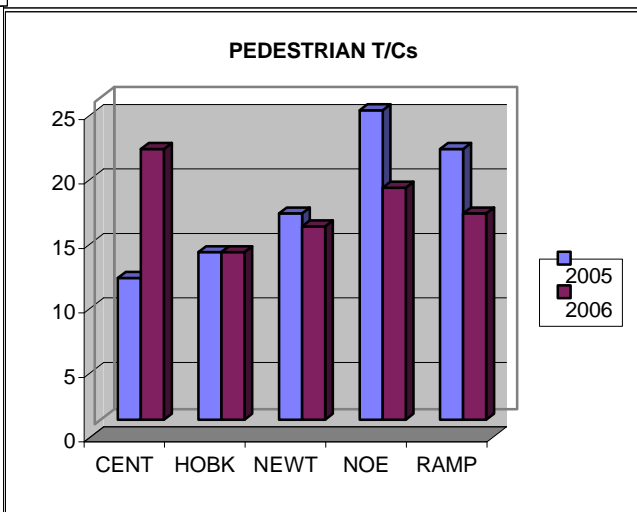
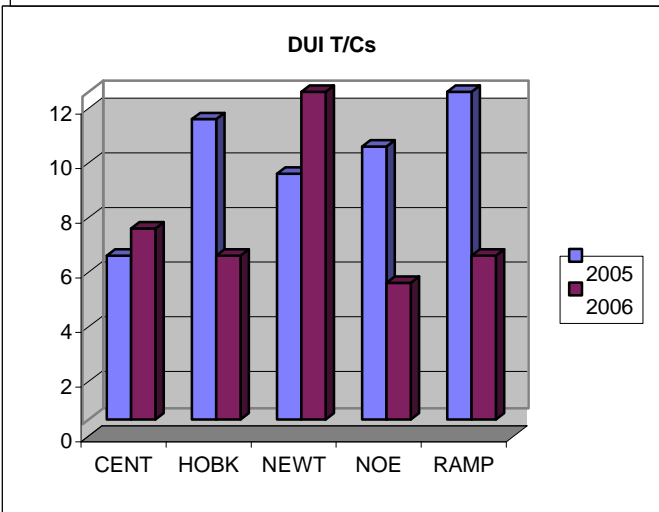
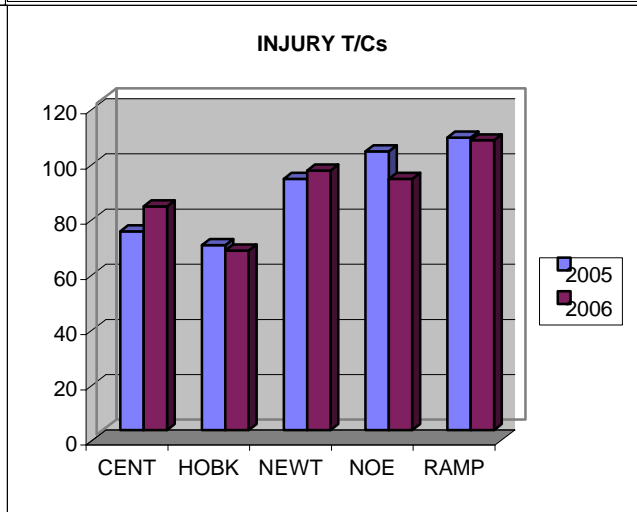
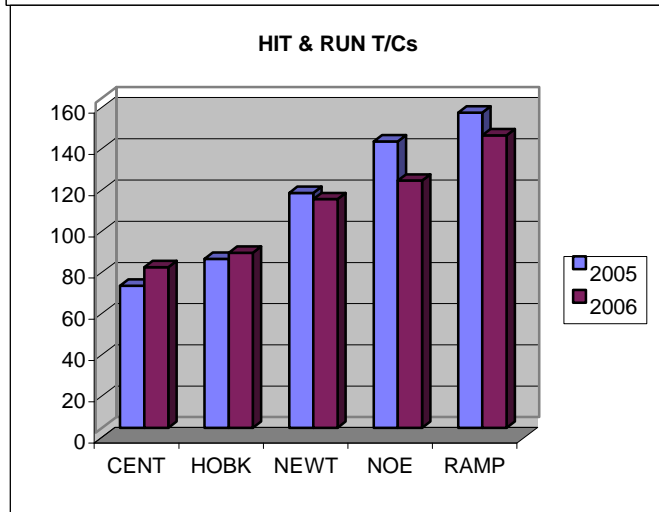
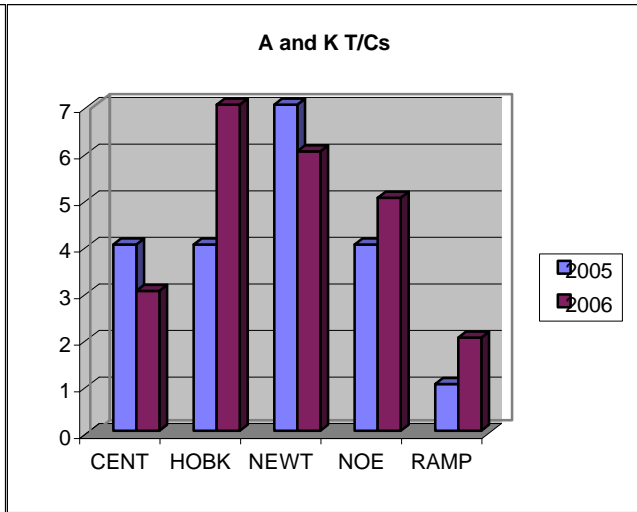
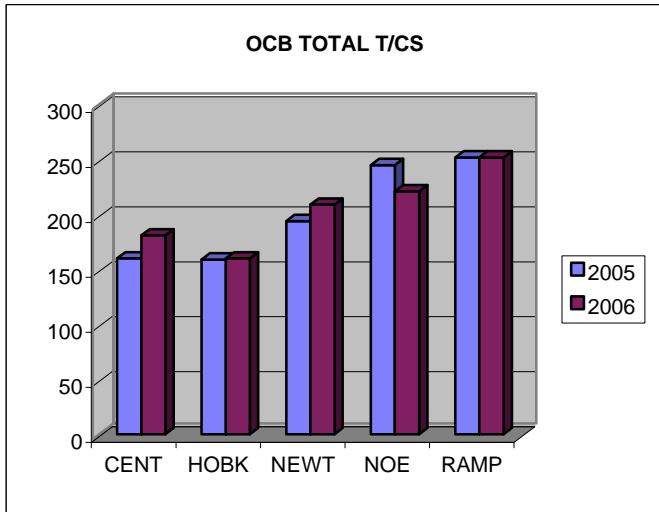
YTD



TRAFFIC SUMMARY

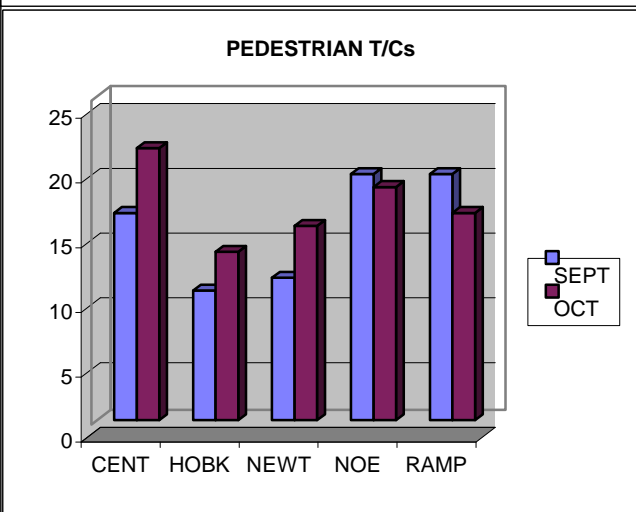
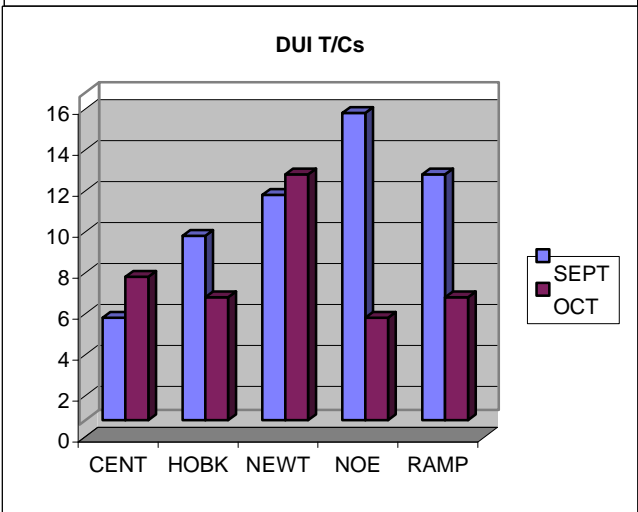
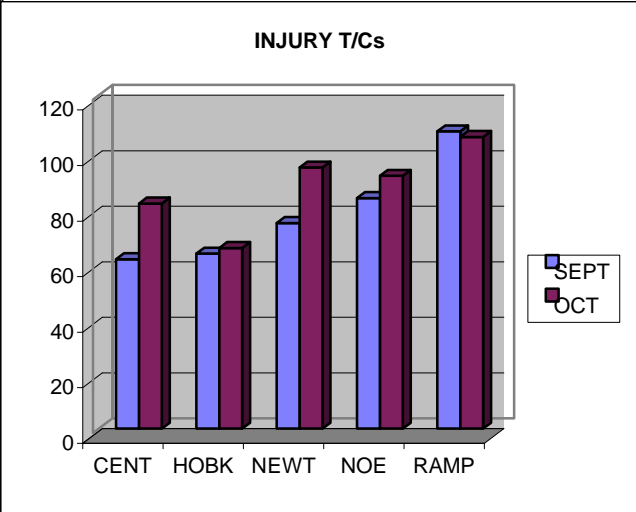
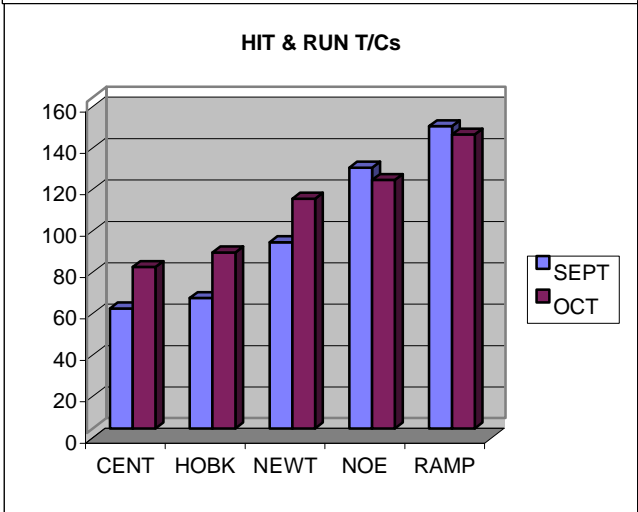
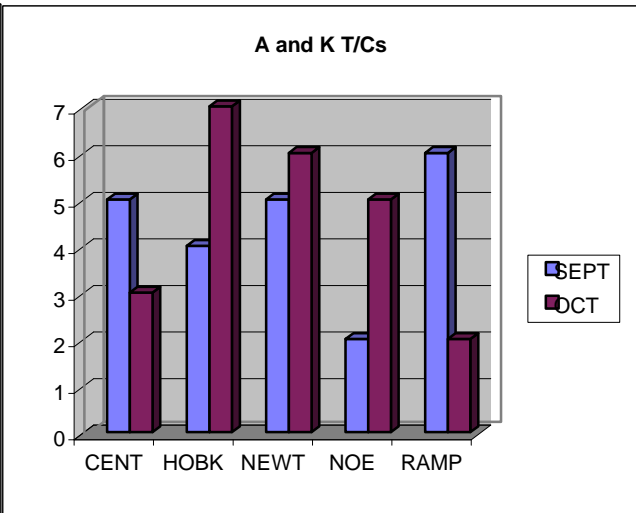
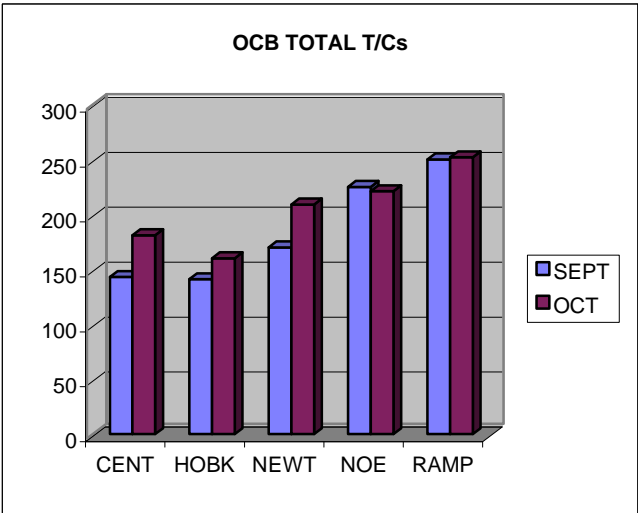
OCT

OCB T/Cs CURRENT MONTH



TRAFFIC SUMMARY

SEPT OCT OCB T/Cs PREVIOUS MONTH VS CURRENT MONTH



JAN THRU OCT 2006			OCT OCT			SEPT OCT				
2005		2006	2005		2006	2006		2006		
TOTAL		TOTAL	TOTAL		TOTAL	TOTAL		TOTAL		
CountOfArea	CountOfArea	CountOfArea	CountOfArea	IntOfArea	CountOfArea	IntOfArea	CountOfArea	IntOfArea		
CENTRAL	1583	1669	CENTRAL	CENTRAL	160	181	CENTRAL	CENTRAL	143	181
HOLLENBECK	1572	1489	HOLLENBECK	HOLLENBECK	159	160	HOLLENBECK	HOLLENBECK	141	160
NEWTON	1888	1983	NEWTON	NEWTON	194	209	NEWTON	NEWTON	170	209
NORTHEAST	2108	2125	NORTHEAST	NORTHEAST	245	221	NORTHEAST	NORTHEAST	225	221
RAMPART	2424	2372	RAMPART	RAMPART	252	252	RAMPART	RAMPART	250	252
INJURY			INJURY			INJURY				
CountOfArea	CountOfArea	CountOfArea	CountOfArea	IntOfArea	CountOfArea	IntOfArea	CountOfArea	IntOfArea		
CENTRAL	744	762	CENTRAL	CENTRAL	72	81	CENTRAL	CENTRAL	61	81
HOLLENBECK	630	611	HOLLENBECK	HOLLENBECK	67	65	HOLLENBECK	HOLLENBECK	63	65
NEWTON	864	861	NEWTON	NEWTON	91	94	NEWTON	NEWTON	74	94
NORTHEAST	825	812	NORTHEAST	NORTHEAST	101	91	NORTHEAST	NORTHEAST	83	91
RAMPART	1028	964	RAMPART	RAMPART	106	105	RAMPART	RAMPART	107	105
K T/Cs			K T/Cs			K T/Cs				
CountOfArea	CountOfArea	CountOfArea	CountOfArea	IntOfArea	CountOfArea	IntOfArea	CountOfArea	IntOfArea		
CENTRAL	5	4	CENTRAL	CENTRAL	2	1	CENTRAL	CENTRAL	1	1
HOLLENBECK	11	3	HOLLENBECK	HOLLENBECK	1	4	HOLLENBECK	HOLLENBECK	1	4
NEWTON	14	10	NEWTON	NEWTON	1	2	NEWTON	NEWTON	1	2
NORTHEAST	7	13	NORTHEAST	NORTHEAST	0	0	NORTHEAST	NORTHEAST	0	0
RAMPART	3	4	RAMPART	RAMPART	0	0	RAMPART	RAMPART	0	0
A T/Cs			A T/Cs			A T/Cs				
CountOfArea	CountOfArea	CountOfArea	CountOfArea	IntOfArea	CountOfArea	IntOfArea	CountOfArea	IntOfArea		
CENTRAL	22	23	CENTRAL	CENTRAL	2	2	CENTRAL	CENTRAL	4	2
HOLLENBECK	25	26	HOLLENBECK	HOLLENBECK	3	3	HOLLENBECK	HOLLENBECK	3	3
NEWTON	35	41	NEWTON	NEWTON	6	4	NEWTON	NEWTON	4	4
NORTHEAST	25	37	NORTHEAST	NORTHEAST	4	5	NORTHEAST	NORTHEAST	2	5
RAMPART	35	33	RAMPART	RAMPART	1	2	RAMPART	RAMPART	6	2
DUI			DUI			DUI				
CountOfArea	CountOfArea	CountOfArea	CountOfArea	IntOfArea	CountOfArea	IntOfArea	CountOfArea	IntOfArea		
CENTRAL	51	47	CENTRAL	CENTRAL	6	7	CENTRAL	CENTRAL	5	7
HOLLENBECK	69	78	HOLLENBECK	HOLLENBECK	11	6	HOLLENBECK	HOLLENBECK	9	6
NEWTON	86	91	NEWTON	NEWTON	9	12	NEWTON	NEWTON	11	12
NORTHEAST	110	95	NORTHEAST	NORTHEAST	10	5	NORTHEAST	NORTHEAST	15	5
RAMPART	142	116	RAMPART	RAMPART	12	6	RAMPART	RAMPART	12	6
H&R			H&R			H&R				
CountOfArea	CountOfArea	CountOfArea	CountOfArea	IntOfArea	CountOfArea	IntOfArea	CountOfArea	IntOfArea		
CENTRAL	685	705	CENTRAL	CENTRAL	69	78	CENTRAL	CENTRAL	58	78
HOLLENBECK	884	775	HOLLENBECK	HOLLENBECK	82	85	HOLLENBECK	HOLLENBECK	63	85
NEWTON	1079	1105	NEWTON	NEWTON	114	111	NEWTON	NEWTON	90	111
NORTHEAST	1186	1170	NORTHEAST	NORTHEAST	139	120	NORTHEAST	NORTHEAST	126	120
RAMPART	1436	1335	RAMPART	RAMPART	153	142	RAMPART	RAMPART	146	142
PED			PED			PED				
CountOfArea	CountOfArea	CountOfArea	CountOfArea	IntOfArea	CountOfArea	IntOfArea	CountOfArea	IntOfArea		
CENTRAL	158	165	CENTRAL	CENTRAL	11	21	CENTRAL	CENTRAL	16	21
HOLLENBECK	120	89	HOLLENBECK	HOLLENBECK	13	13	HOLLENBECK	HOLLENBECK	10	13
NEWTON	169	160	NEWTON	NEWTON	16	15	NEWTON	NEWTON	11	15
NORTHEAST	136	147	NORTHEAST	NORTHEAST	24	18	NORTHEAST	NORTHEAST	19	18
RAMPART	189	185	RAMPART	RAMPART	21	16	RAMPART	RAMPART	19	16